

2K-MIX SUPERFAST

NO LONGER AVAILABLE

Apply like a one-component adhesive

Very fast curing

2 versions: Fast and Superfast

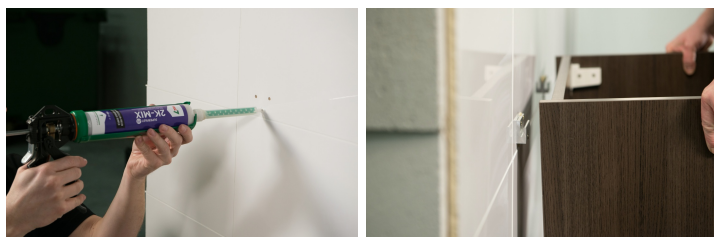
Suitable for bonding, filling and repairing



GENERAL INFORMATION

Product description

- To be applied like a 1-component adhesive.
- Very fast curing - workable after 25 minutes.
- 2 versions: Fast and Superfast.
- Suitable for adhesive bonding, anchoring, filling and repairing.
- Structural adhesion on most building materials.
- Perfectly workable: drilling, tapping, sanding, milling, painting,...
- Perfect chemical and mechanical resistance.
- Solvent-free - no shrinkage.



Available packages & colors

SKU	EAN	Description
591533000	5414195599532	2K Mix Superfast - cartridge 250ml

Application

- bonding of all combinations of common building materials: ABS, SMC, PC, HPL, melamine wood, glass, stone, ferrous and non-ferrous materials,...
- attachment of insulating material such as Styropur, Styrodur, Rockwool, Rockpanel ...

TECHNICAL INFORMATION

Specifications

- Base: polyurethane.
- Mixing time: 2 min.
- Working time: 4 min.
- Handleable after: 25 min.
- Fully loadable after: 60 min.
- Tensile strength: 2300 N/cm².
- Shear strength on aluminium: 1000 N/cm².
- Elongation-percentage: 78 %.
- Shelf life : 24 months in original, closed packaging ; keep dry, cool and frost proof. Can be used for 6 months after opening.
- Safety measures: Please consult the safety data sheet.

Safety data sheet

[2k-mix-superfast-curative-sds-en-220517.pdf](#)

[2k-mix-superfast-prepolymer-sds-en-220221.pdf](#)

Technical data sheet

[2k-mix-superfastnovatechtec2024-10-17-15-12-20en.pdf](#)

Usage table image

[2k-mix-tabel.png](#)

INSTRUCTIONS

As from 24 August 2023 adequate training is required before industrial or professional use.

- The surface has to be dry, clean, free of dust and grease. Clean with Tec7 Cleaner and/or Multiclean.
- Sand with a coarse grain if necessary.
- See instructions for use of hte cartridge on the outside packaging.

